



PRODUCT REFERENCE GUIDE

PRODUCT REFERENCE GUIDE

Table of Contents

EPDM Accessories	1
Thermoplastic Accessories.....	3
Fasteners & Plates.....	9
Adhesives, Primers, and Sealants	13
Air & Vapor Barriers	20
Insulation Reference	21
EPDM Reference	25
TPO/PVC Reference	27

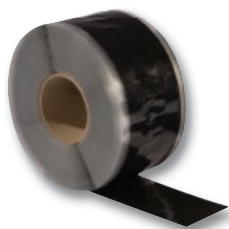
Disclaimer: All product information in this guide is subject to change without notice. While Carlisle makes every effort to provide the most accurate, up-to-date information, occasionally, one or more items in our guide may be mislabeled. For the most up-to-date version, please visit the Carlisle website at www.carlisesyntec.com.

Sure-Seal/Sure-White EPDM Accessories

Sure-Seal[®] EPDM
Roofing Systems

Sure-White[®] EPDM
Roofing Systems

PRESSURE-SENSITIVE SECURTAPE™



Fully cured synthetic rubber product used for splicing cured EPDM membrane in ballasted, adhered and mechanically fastened roofing systems.

Sizes Available:

3" x 100' – Product Number: 300465 – Black
3" x 100' – Product Number: 303260 – White
6" x 100' – Product Number: 302952 – Black
6" x 100' – Product Number: 317501 – White

Quantity Per Box:

4 rolls (3"), 2 rolls (6")

20" PRESSURE-SENSITIVE CURED FLASHING



20" Pressure-Sensitive (PS) Cured Flashing is pre-cut with factory-applied SecurTAPE and is the most efficient, labor-saving way to flash a curb. Production time on projects with numerous curbs or wall flashings can be reduced with this productivity-boosting accessory.

Sizes Available:

20" x 50' – Product Number: 329385 – Black
20" x 50' – Product Number: 330913 – White

Quantity Per Box: 1 roll

PRESSURE-SENSITIVE CURB FLASHING



Cured EPDM membrane pre-cut to 20" wide with 6" PS SecurTAPE already applied. This product provides the most efficient way to flash curbs and short walls.

Sizes Available:

20" x 50' – Product Number: 308705 – Black

Quantity Per Box: 1 roll

PRESSURE-SENSITIVE RUSS



Reinforced Universal Securement Strip (RUSS) combines reinforced EPDM with 3"-wide Pressure-Sensitive SecurTAPE for additional membrane securement at the perimeter and penetrations.

Sizes Available:

6" RUSS – Product Number: 300490 – Black
6" RUSS – Product Number: 309268 – White
Use with all EPDM Systems
9" RUSS – Product Number: 300489
Use with Mechanically Fastened EPDM Systems

Quantity Per Box:

2 rolls (6"), 1 roll (9")

PRESSURE-SENSITIVE CURED COVER STRIP



Cured EPDM membrane laminated to a synthetic rubber adhesive makes this product the optimal solution to overlay seam fastening plates, strip in seams and metal edgings, or make roof repairs.

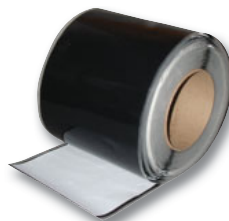
Sizes Available:

6" x 100' – Product Number: 308701 – Black
6" x 100' – Product Number: 308910 – White
9" x 100' – Product Number: 308839 – Black
9" x 100' – Product Number: 309121 – White
12" x 50' – Product Number: 317598 – Black
12" x 50' – Product Number: 317596 – White

Quantity Per Box:

2 rolls (6"), 1 roll (9" and 12")

PRESSURE-SENSITIVE ELASTOFORM FLASHING®



Uncured EPDM laminated to synthetic rubber adhesive. Pressure-Sensitive Elastoform Flashing can be used to flash corners, pipes, and other penetrations.

Sizes Available:

6" x 100' – Product Number: 310433 – Black
6" x 100' – Product Number: 310434 – White
9" x 50' – Product Number: 303162 – Black
9" x 50' – Product Number: 309950 – White
12" x 50' – Product Number: 305723 – Black
12" x 50' – Product Number: 309951 – White

Quantity Per Box:

2 rolls (6"), 1 roll (9" and 12")

PRESSURE-SENSITIVE OVERLAYMENT STRIP



Semi-cured EPDM laminated to a synthetic rubber adhesive. It is designed for stripping in drip edges, all types of metal edging and Carlisle seams, and all fastening plates.

Sizes Available:

6" x 100' – Product Number: 302319 – Black
9" x 100' – Product Number: 302281 – Black
12" x 50' – Product Number: 317600 – Black

Quantity Per Box:

2 rolls (6"), 1 roll (9"), 1 roll (12")

Sure-Seal/Sure-White EPDM Accessories

PRESSURE-SENSITIVE T-JOINT COVERS



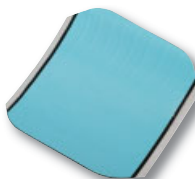
Semi-cured EPDM laminated to a synthetic rubber adhesive. Used to seal field splice intersections and horizontal-to-vertical transitions of field splices. 12" x 12" T-Joint Covers are available for 30-Year Warranty Systems.

Sizes Available:

6" x 6" – Product Number: 303100 – Black
6" x 6" – Product Number: 332871 – White
12" x 12" – Product Number: 305089 – Black

Quantity Per Box: 20

PRESSURE-SENSITIVE INSIDE/OUTSIDE CORNERS



Uncured EPDM laminated to a synthetic rubber adhesive. The pre-cut corners greatly reduce installation time and can be used for inside and outside corner installations.

Sizes Available:

7" x 9" – Product Number: 300199 – Black
7" x 9" – Product Number: 310310 – White*

Quantity Per Box: 20

*White can also be used as a T-Joint Cover

PRESSURE-SENSITIVE POURABLE SEALER POCKETS



Uncured Sure-Seal EPDM Flashing with a synthetic rubber adhesive and a 2" support strip pre-applied to the flashing. Sizes can be combined to form larger pockets when required.

Sizes Available:

4" diameter – Product Number: 300208 – Black
6" diameter – Product Number: 300209 – Black
6" diameter – Product Number: 316243 – White
8" diameter – Product Number: 300210 – Black
8" diameter – Product Number: 332890 – White

Quantity Per Box: 12

PRESSURE-SENSITIVE PIPE SEALS



Cured EPDM with a synthetic rubber adhesive. PS Pipe Seals increase the speed and ease of installation.

Sizes Available:

½" – 3" – Product Number: 300204 – Black
1" – 6" – Product Number: 309750 – Black
1" – 6" – Product Number: 316593 – White

Quantity Per Box: 10

PRESSURE-SENSITIVE WALKWAY PADS



Cured EPDM with a synthetic rubber adhesive. Pressure-Sensitive Walkway Pads are designed to protect the Carlisle EPDM membrane in areas exposed to repetitive foot traffic.

Sizes Available:

30" x 30" – Product Number: 300829 – Black
30" x 30" – Product Number: 309589 – White

Quantity Per Pallet: 50

PIPE SUPPORTS



An extruded EPDM product used to support steel pipe, electrical conduit, PVC pipe, and copper tubing on Carlisle's EPDM, TPO, and PVC roofing systems.

Sizes Available:

Mini: ½" - 1½" – Product Number: 309403
Small: ¾" - 2" – Product Number: 309402
Large: 2½" - 5" – Product Number: 309404

Quantity Per Box:

20 (Mini and Small), 10 (Large)



Thermoplastic Accessories

Sure-Weld™ TPO
Roofing Systems

Sure-Flex™ PVC
Roofing Systems

Sure-Flex™ KEE HP
Roofing Systems

REINFORCED OVERLAYMENT



Pre-slit reinforced membrane used to overlay fasteners, plates, and end laps on FleeceBACK® and Self-Adhering Technology (SAT™) membranes.

TPO

Sizes Available:

45-mil

6" x 100' – Product Number: 300485 – White

6" x 100' – Product Number: 300486 – Gray

6" x 100' – Product Number: 302811 – Tan

60-mil

6" x 100' – Product Number: 325005 – White

6" x 100' – Product Number: 325003 – Gray

6" x 100' – Product Number: 325004 – Tan

9" x 50' – Product Number: 310419 – White

9" x 50' – Product Number: 310417 – Gray

9" x 50' – Product Number: 310418 – Tan

80-mil

9" x 50' – Product Number: 318404 – White

Quantity Per Box: 3 rolls (6"), 2 rolls (9")

PVC / KEE HP

Sizes Available:

6" x 100' – Product Number 327852 – White/Gray (KEE HP Non-Reinforced)

6" x 100' – Product Number 327853 – White/Tan (KEE HP Non-Reinforced)

Quantity Per Box: 2 rolls/carton

NON-REINFORCED FLASHING



Non-reinforced thermoplastic membrane used to field-fabricate pipe flashings and scuppers when the use of a pre-molded accessory is not feasible.

TPO

Sizes Available:

12" x 50' – Product Number: 300473 – White

12" x 50' – Product Number: 300479 – Gray

12" x 50' – Product Number: 300476 – Tan

24" x 50' – Product Number: 300474 – White

24" x 50' – Product Number: 300480 – Gray

24" x 50' – Product Number: 300477 – Tan

24" x 50' – Product Number: 332963 – Medium Bronze

24" x 50' – Product Number: 328056 – Rock Brown

24" x 50' – Product Number: 328047 – Terra Cotta

24" x 50' – Product Number: 328053 – Slate Gray

24" x 50' – Product Number: 328050 – Patina Green

Quantity Per Box: 1 roll

PVC / KEE HP

Sizes Available:

12" x 50' – Product Number: 327840 – White/Gray

12" x 50' – Product Number: 327842 – White/Tan

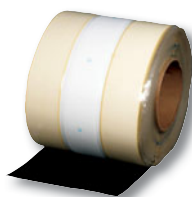
24" x 50' – Product Number: 327841 – White/Gray

24" x 50' – Product Number: 327843 – White/Tan

24" x 50' – Product Number: 334437 – Light Gray/Gray

Quantity Per Box: 1 roll

TPO PRESSURE-SENSITIVE RUSS



Available in 10" RUSS (shown) and used in place of narrow-width sheets to secure membrane in the perimeter of the roof on mechanically fastened systems. 6" RUSS is also available and is used to secure membrane at the base of vertical walls for additional membrane securement without penetrating the sheet.

Sizes Available:

6" x 100' – Product Number: 303373

10" x 100' – Product Number: 305442

Quantity Per Box: 1 roll (10"), 2 rolls (6")

PVC YELLOW WARNING STRIP



Reinforced PVC Yellow Warning Strip can be used on PVC to indicate roof edges or other hazards.

Sizes Available:

6" x 150' – Product Number: 326180

Quantity Per Box: 2 rolls

REINFORCED COVERSTRIP

Carlisle's Reinforced Coverstrip is an 8" (20.3 cm)-wide, nominal 60-mil (1.52 mm) and 80-mil (2.03 mm)-thick flashing that contains a polyester reinforcing fabric. Reinforced Coverstrip is used for stripping in rows of fasteners and plates and covering the butt joints of Carlisle PVC and KEE HP membranes.



PVC / KEE HP

Sizes Available:

8" x 75' – Product Number: 325165 – White (KEE HP Reinforced)

8" x 75' – Product Number: 325167 – Gray (KEE HP Reinforced)

8" x 75' – Product Number: 326120 – Tan (KEE HP Reinforced)

8" x 75' – Product Number: 325168 – White (PVC Reinforced Coverstrip)

8" x 75' – Product Number: 325169 – Gray (PVC Reinforced Coverstrip)

8" x 75' – Product Number: 326121 – Tan (PVC Reinforced Coverstrip)

8" x 100' – Product Number 325981 – White (.60-mil KEE HP Reinforced)

Quantity Per Box: 2 rolls (60-mil), 1 roll (80-mil)

Thermoplastic Accessories

PVC PRESSURE SENSITIVE COVER STRIP



Non-reinforced KEE HP flashing laminated to a nominal 35-mil, fully cured, pressure-sensitive, synthetic rubber adhesive.

Sizes Available:

6" x 100' – Product Number: 332616 – White
6" x 100' – Product Number: 332617 – Gray
6" x 100' – Product Number: 332618 – Tan

Quantity Per Box: 2 rolls

SQUARE TUBING WRAPS



Fabricated using 60-mil reinforced Sure-Weld detail membrane and Sure-Flex membranes, square tubing wraps are designed to flash square metal tubing. A split and overlap tab allow the flashings to be opened and wrapped around a square penetration with an obstruction. Other sizes and colors available through special order.

TPO

Sizes Available:

3" x 3" – Product Number: 305576 – White
3" x 3" – Product Number: 307664 – Gray
3" x 3" – Product Number: 307660 – Tan
4" x 4" – Product Number: 305577 – White
4" x 4" – Product Number: 307665 – Gray
4" x 4" – Product Number: 307661 – Tan
5" x 5" – Product Number: 305578 – White
5" x 5" – Product Number: 307666 – Gray
5" x 5" – Product Number: 307662 – Tan
6" x 6" – Product Number: 305579 – White
6" x 6" – Product Number: 307667 – Gray
6" x 6" – Product Number: 307663 – Tan

Quantity Per Box: 8

TPO PRESSURE-SENSITIVE COVERSTRIP



Non-reinforced TPO laminated to pressure-sensitive tape used for stripping in flat metal flanges such as drip edge or gravel stop.

Sizes Available:

6" x 100' – Product Number: 303102 – White
6" x 100' – Product Number: 303103 – Gray
6" x 100' – Product Number: 303104 – Tan

Quantity Per Box: 2 rolls

YELLOW PS WARNING STRIP

Non-reinforced yellow TPO coverstrip can be used on TPO or EPDM to indicate roof edges or other hazards.

Sizes Available:

6" x 100' – Product Number: 325721

Quantity Per Box: 2 rolls



PVC

Sizes Available:

3" x 3" – Product Number: 307742 – White
3" x 3" – Product Number: 307743 – Gray
3" x 3" – Product Number: 307744 – Tan
4" x 4" – Product Number: 307745 – White
4" x 4" – Product Number: 307746 – Gray
4" x 4" – Product Number: 307747 – Tan
6" x 6" – Product Number: 307748 – White
6" x 6" – Product Number: 307749 – Gray
6" x 6" – Product Number: 307750 – Tan

Quantity Per Box: 8

MOLDED PIPE SEALS



Injection-molded, pre-formed pipe flashings for pipes 3/4" to 8" diameter. Molded Pipe Seals provide a reliable method of waterproofing round pipe penetrations, as well as a substantial labor savings compared to field-fabrication.

TPO

Sizes Available:

3/4" – 8" diameter – Product Number: 316534 – White
3/4" – 8" diameter – Product Number: 316535 – Gray
3/4" – 8" diameter – Product Number: 316536 – Tan

Quantity Per Box: 8

PVC

Sizes Available:

3/4" – 8" diameter – Product Number: 316537 – White
3/4" – 8" diameter – Product Number: 322959 – Gray
3/4" – 8" diameter – Product Number: 323823 – Tan

Quantity Per Box: 8



Thermoplastic Accessories

Sure-Weld TPO
Roofing Systems

Sure-Flex PVC
Roofing Systems

Sure-Flex KEE HP
Roofing Systems

SPLIT PIPE SEALS



Prefabricated flashings made of 60-mil reinforced Sure-Weld detail membrane and Sure-Flex membrane used for flashing pipes with obstructions that prevent the use of a molded pipe seal. Other sizes and colors available via special order.

TPO

Sizes Available:

1" – Product Number: 303504 – White
1" – Product Number: 307654 – Gray
1" – Product Number: 307648 – Tan
2" – Product Number: 303505 – White
2" – Product Number: 307655 – Gray
2" – Product Number: 307649 – Tan
3" – Product Number: 303506 – White
3" – Product Number: 307656 – Gray
3" – Product Number: 307650 – Tan
4" – Product Number: 303507 – White
4" – Product Number: 307657 – Gray
4" – Product Number: 307651 – Tan
5" – Product Number: 303508 – White
5" – Product Number: 307658 – Gray
5" – Product Number: 307652 – Tan
6" – Product Number: 303509 – White
6" – Product Number: 307659 – Gray
6" – Product Number: 307653 – Tan

Quantity Per Box: 8

PVC

Sizes Available:

1" – Product Number: 307724 – White
1" – Product Number: 307725 – Gray
1" – Product Number: 307726 – Tan
2" – Product Number: 307727 – White
2" – Product Number: 307728 – Gray
2" – Product Number: 307729 – Tan
3" – Product Number: 307730 – White
3" – Product Number: 307731 – Gray
3" – Product Number: 307732 – Tan
4" – Product Number: 307733 – White
4" – Product Number: 307734 – Gray
4" – Product Number: 307735 – Tan
5" – Product Number: 307736 – White
5" – Product Number: 307737 – Gray
5" – Product Number: 307738 – Tan
6" – Product Number: 307739 – White
6" – Product Number: 307740 – Gray
6" – Product Number: 307741 – Tan

Quantity Per Box: 8

CURB WRAP CORNERS



Prefabricated flashings made of 60-mil reinforced Sure-Weld detail membrane designed to reduce curb flashing time. Each corner has a 6"-wide base flange and a 12" overall height. One curb will require 4 corners. Other sizes and colors available through special orders. Available in 1- or 2-piece wraps.

TPO

Sizes Available:

7" Wrap for 12" Curb –
Product Number: 305062 – White
13" Wrap for 24" Curb –
Product Number: 305063 – White
19" Wrap for 36" Curb –
Product Number: 305064 – White

Quantity Per Box: 12 pieces or 3 complete curbs

PVC

Sizes Available:

7" Wrap for 12" Curb –
Product Number: 322973 – White
Product Number: 322970 – Gray
Product Number: 322977 – Tan
13" Wrap for 24" Curb –
Product Number: 322975 – White
Product Number: 322971 – Gray
Product Number: 322978 – Tan
19" Wrap for 36" Curb –
Product Number: 322976 – White
Product Number: 322972 – Gray
Product Number: 322979 – Tan

Quantity Per Box: 12 pieces or 3 complete curbs

UNIVERSAL CORNERS



Pre-molded corners, used for flashing outside or inside corners on new construction installations where right-angled conditions are more common. Installation is fast and easy with no stretching required.

TPO

Sizes Available: One Size

Product Number: 318070 – White
Product Number: 327601 – Gray
Product Number: 327602 – Tan

Quantity Per Box: 20

PVC

Sizes Available: One Size

Product Number: 318071 – White
Product Number: 329288 – Gray
Product Number: 329289 – Tan

Quantity Per Box: 20

Thermoplastic Accessories

MOLDED SEALANT POCKETS



Interlocking, two-piece, injection-molded, weldable pockets used to waterproof pipe clusters or other oddly shaped penetrations.

TPO

Sizes Available:

6" wide x 2" high
Can be adjusted from 7½" to 11½" in length
Product Number: 316539 – White
Product Number: 316540 – Gray
Product Number: 316541 – Tan

Quantity Per Box: 5 complete pockets

PVC

Sizes Available:

6" wide x 2" high
Can be adjusted from 7½" to 11½" in length
Product Number: 316542 – White

Quantity Per Box: 5 complete pockets

INSIDE/OUTSIDE CORNERS



Pre-molded corners, used for flashing inside and outside corners on a variety of details.

TPO

Sizes Available: One Size

Product Number: 300020 – Gray – Outside
Product Number: 300025 – Tan – Outside
Product Number: 300016 – White – Outside
Product Number: 307406 – White – Inside
Product Number: 307407 – Tan – Inside
Product Number: 307408 – Gray – Inside

Quantity Per Bag: 12

PVC

Sizes Available: One Size

Product Number: 329286 – White/Gray – Outside
Product Number: 329284 – White/Gray – Inside
Product Number: 329287 – White/Tan – Outside
Product Number: 329285 – White/Tan – Inside

Quantity Per Bag: 12

CONTOUR RIB™



This profile is extruded from the same weather-resistant TPO or PVC compound as the membrane. The Contour Rib Profile is secured to the TPO or PVC roofing membrane to simulate a standing seam metal roofing system. The physical dimensional stability of the profile is enhanced with fiberglass and the rectangular profile provides exceptional shadow lines for aesthetic appeal.

TPO

Sizes Available:

10' – Product Number: 324574 – White
10' – Product Number: 324572 – Gray
10' – Product Number: 324573 – Tan
10' – Product Number: 333064 – Medium Bronze
10' – Product Number: 330830 – Rock Brown
10' – Product Number: 330797 – Terra Cotta
10' – Product Number: 330799 – Slate Gray
10' – Product Number: 330798 – Patina Green

Quantity Per Box: 20

PVC

Sizes Available:

10' – Product Number: 321909 – White
10' – Product Number: 321911 – Gray
10' – Product Number: 321910 – Tan
10' – Product Number: 334439 – Light Gray

Quantity Per Box: 20

T-JOINT COVERS



Injection-molded non-reinforced flashings used to seal T-Joint splice intersections.

TPO

Sizes Available:

4½" diameter – Product Number: 307476 – White
4½" diameter – Product Number: 307478 – Gray
4½" diameter – Product Number: 307477 – Tan

Quantity Per Box: 100

PVC

Sizes Available:

4½" diameter – Product Number: 308224 – White
4½" diameter – Product Number: 309494 – Gray
4½" diameter – Product Number: 309847 – Tan

Quantity Per Box: 100



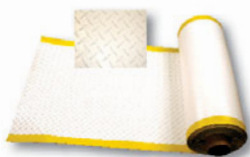
Thermoplastic Accessories

Sure-Weld™ TPO
Roofing Systems

Sure-Flex™ PVC
Roofing Systems

Sure-Flex™ KEE HP
Roofing Systems

WALKWAY ROLLS



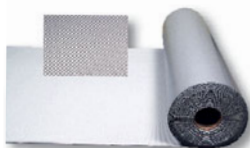
Heat-weldable walkway rolls designed to protect Carlisle's TPO and PVC membranes in areas exposed to repetitive foot traffic and other hazards.

TPO

Sizes Available:

34" x 50' – Product Number: 310508 – White
34" x 50' – Product Number: 310509 – Gray
34" x 50' – Product Number: 310510 – Tan

Packaged Individually



PVC

Sizes Available:

36" x 60' – Product Number: 307711 – Gray

Packaged Individually

CROSSGRIP WALKWAY



PVC and TPO Crossgrip Walkway is an open grid walkway used to protect the membranes from regular foot traffic and other hazards.

TPO

Sizes Available:

3' x 33' – Product Number: 332633 – White
3' x 33' – Product Number: 332634 – Gray

Packaged Individually

PVC

Sizes Available:

3' x 33' – Product Number: 332475 – White
3' x 33' – Product Number: 332474 – Gray

Packaged Individually

COATED METAL



24-gauge (0.6 mm) galvanized steel sheets coated with a layer of .035" non-reinforced flashing. Membrane may be welded directly to the coated metal. The sheet is cut to the appropriate width and used to fabricate metal drip edges or other roof perimeter edging profiles.

TPO

Sizes Available:

5 Pcs/Pallet –

4' x 10' – Product Number: 332916 – Medium Bronze Coated Metal
4' x 10' – Product Number: 332913 – Rock Brown Coated Metal
4' x 10' – Product Number: 332915 – Terra Cotta Coated Metal
4' x 10' – Product Number: 332914 – Slate Gray Coated Metal
4' x 10' – Product Number: 332912 – Patina Green Coated Metal

10 Pcs/Pallet –

4' x 10' – Product Number: 309272 – White
4' x 10' – Product Number: 309273 – Gray
4' x 10' – Product Number: 309274 – Tan

25 Pcs/Pallet –

4' x 10' – Product Number: 303181 – White
4' x 10' – Product Number: 303183 – Gray
4' x 10' – Product Number: 303182 – Tan

PVC

Sizes Available:

10 Pcs/Pallet –

4' x 10' – Product Number: 307708 – White
4' x 10' – Product Number: 307709 – Gray
4' x 10' – Product Number: 307710 – Tan
4' x 10' – Product Number: 334438 – Light Gray

Thermoplastic Accessories

ONE- AND TWO-WAY PRESSURE RELIEF VENTS



Engineered to reduce moisture within the roofing system and release trapped air pressure within the building. One-Way Vents allow trapped air pressure to escape; Two-Way Vents (combined with One-Way Vents) help to reduce moisture.

Sizes Available:

8" x 11" – Product Number: 327975 – One-Way Pressure Relief Vent

8" x 11" – Product Number: 327976 – Two-Way Pressure Relief Vent

Quantity Per Box: 25 Pcs

TPO

Sizes Available:

9" x 12" – Product Number: 334849 – TPO One-Way Vent

9" x 12" – Product Number: 334480 – TPO Two-Way Vent

Quantity Per Box: 4 Pcs



PVC

Sizes Available:

9" x 12" – Product Number: 335592 – PVC One-Way Vent

9" x 12" – Product Number: 335593 – PVC Two-Way Vent

Quantity Per Box: 4 Pcs

SQUARE TOP VENTS



Available in TPO and PVC versions, Square Top Vents are designed to allow air to flow freely through the vent while preventing water from infiltrating the roofing system.

TPO

Sizes Available:

8" – Product Number: 326867 – TPO Square Top Vent

Quantity Per Box: 2 Pcs

PVC

Sizes Available:

8" – Product Number: 326867 – PVC Square Top Vent

Quantity Per Box: 2 Pcs

T-TOP VENTS



Available in TPO and PVC versions, T-Top Vents are designed to allow air to flow freely through the vent while preventing water from infiltrating the roofing system.

TPO

Sizes Available:

2 Pcs/Box –

4" – Product Number: 326896 – TPO T-Top Vent

6" – Product Number: 326882 – TPO T-Top Vent

3 Pcs/Box –

8" – Product Number: 326883 – TPO T-Top Vent

PVC

Sizes Available:

2 Pcs/Box –

4" – Product Number: 326868 – PVC T-Top Vent

6" – Product Number: 326880 – PVC T-Top Vent

3 Pcs/Box –

8" – Product Number: 326881 – PVC T-Top Vent

- Sure-Seal, Sure-White, and Sure-Tough EPDM
- Sure-Weld TPO
- Sure-Flex PVC

Fasteners & Plates

HP FASTENER



Applicable for Sure-Seal, Sure-Tough, Sure-Weld, and Sure-Flex mechanically fastened and fully adhered systems. Can be used to secure all EPDM membranes, RUSS, and insulation. Not applicable for securing TPO and PVC membranes. Compatible with wood (minimum $1\frac{1}{2}$ " [12mm] CDX plywood) and steel decks (22-gauge [0.76 mm] or heavier).

Sizes Available:

1 $\frac{1}{4}$ ", 2"– 15" (1" Increments)

Size & Quantity Per Box:

2"– 6": 1,000; 7"– 12": 500; 13"– 15": 250
1 $\frac{1}{4}$ ": 1,000

INSULFAST™ FASTENER



Applicable for Sure-Seal, Sure-White, Sure-Weld, and Sure-Flex mechanically fastened and fully adhered systems. Can be used to secure insulation. Compatible with wood (minimum $1\frac{1}{2}$ " [12mm] CDX plywood) and steel decks (22-gauge [0.76 mm] or heavier).

Sizes Available:

1 $\frac{1}{8}$ ", 2", 2 $\frac{1}{4}$ ", 3"– 8" (1" increments)

Size & Quantity Per Box:

1 $\frac{1}{8}$ ", 2 $\frac{1}{4}$ ", 2"– 8": 1,000

GYPTEC FASTENER & PLATE



Applicable for Sure-Seal, Sure-Weld, and Sure-Flex mechanically fastened and fully adhered systems. Can be used to secure membranes, RUSS, and insulation. Applicable to cementitious wood fiber, lightweight concrete and gypsum decks.

Sizes Available:

2 $\frac{1}{2}$ "– 10" ($\frac{1}{2}$ " Increments)

Size & Quantity Per Box:

2 $\frac{1}{2}$ "– 7": 500; 7 $\frac{1}{2}$ "– 10": 250

GYPTEC PLATE

Sizes Available:

2" Metal membrane plate
3" Metal insulation plate

Quantity Per Box: 1,000

HP-X FASTENER™ & HP-XTRA FASTENER



Applicable for Sure-Seal, Sure-Weld, and Sure-Flex mechanically fastened and fully adhered systems. Can be used to secure membranes, RUSS, and insulation. Compatible with wood (minimum $1\frac{1}{2}$ " [12mm] CDX plywood) and steel decks (22-gauge [0.76 mm] or heavier).

Sizes Available:

2"– 8" (1" Increments)
10"– 16" (2" Increments)

Size & Quantity Per Box:

2"– 4": 1,000; 5"– 12": 500; 14"– 16": 250

HP-XTRA FASTENER

Also available (not shown)

A #21 diameter fastener compatible with wood (minimum $1\frac{1}{2}$ " [12mm] CDX plywood) and steel decks (22-gauge [0.76 mm] or heavier).

Sizes Available:

2" – 8" (1" increments)

Size & Quantity Per Box:

500 (2" – 6"), 250 (7" – 8")

HD 14-10 FASTENER



Applicable for Sure-Seal, Sure-Tough, Sure-Weld, and Sure-Flex mechanically fastened and fully adhered systems. Can be used to secure membranes, RUSS, and insulation. Compatible with structural concrete (minimum 3,000 psi).

Sizes Available:

2"– 12" (1" Increments)
14"– 24" (2" Increments)

Size & Quantity Per Box:

2"– 4": 1,000; 5"– 11": 500; 12"– 24": 250

CD-10 FASTENER



Applicable for Sure-Seal, Sure-Weld, and Sure-Flex mechanically fastened roofing systems. Can be used to secure membranes, RUSS, and insulation. Compatible with structural concrete decks (minimum 2,500 psi).

Sizes Available:

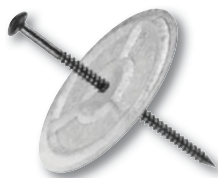
2"– 6" ($\frac{1}{2}$ " Increments)
7"– 12" (1" Increments)

Size & Quantity Per Box:

2"– 8": 500; 9"– 12": 250

Fasteners & Plates

ASAP INSULFAST FASTENER AND PLATE



A pre-assembled InsulFast fastener and plastic or metal insulation plate is acceptable for insulation attachment in both mechanically attached and fully adhered applications. Can be used to secure insulation. Compatible with wood (minimum $\frac{1}{2}$ " [12mm] CDX plywood) and steel decks (22-gauge [0.76 mm] or heavier). Longer fastener sizes available through special order.

Sizes Available:

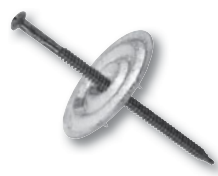
2 $\frac{1}{4}$ ", 3" – 8" (1" Increments)

Size & Quantity Per Box:

2 $\frac{1}{4}$ " – 8": 250; 10" – 12": 200

Applications requiring a fastener larger than 8" should use HD 14-10 fasteners.

HP-X ASAP



A pre-assembled HP-X fastener and Piranha Plate™. Applicable for Sure-Weld and Sure-Flex mechanically fastened systems. Can be used to secure membranes, RUSS, and insulation. Compatible with wood (minimum $\frac{1}{2}$ " [12mm] CDX plywood) and steel decks (22-gauge [0.76 mm] or heavier).

Sizes Available:

2"–10" (1" Increments)

12"–16" (2" Increments)

Size & Quantity Per Box:

2"– 9": 250; 10"– 12": 200; 14"– 16": 150

RETRODRILLER FASTENER



A specially designed fastener with a $\frac{1}{2}$ " drill point used for attaching Sure-Tough, Sure-Weld, and Sure-Flex membranes to structural steel purlins (up to $\frac{3}{16}$ ") in standing seam metal roof retrofit applications.

Sizes Available:

4", 5", 6", 8" & 10"

Size & Quantity Per Box:

500

HP LITE-DECK FASTENER



Applicable for Sure-Seal, Sure-Weld, and Sure-Flex mechanically fastened and fully adhered roofing systems. Used in conjunction with a specially designed 3" Lite-Deck Metal Plate for Insulation attachment to gypsum, cementitious wood fiber (Tectum), and lightweight structural concrete decks. Features an oversize diameter (0.312" shank) and a deep, coarse thread designed for high pullout resistance.

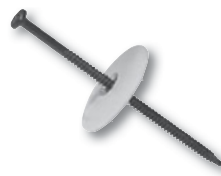
Sizes Available:

2 $\frac{5}{8}$ ", 3"– 10", 12" (1" Increments)

Size & Quantity Per Box:

2 $\frac{5}{8}$ " – 4": 500; 5"– 8": 250; 9", 10", 12": 125

POLYMER PRE-ASSEMBLED



Pre-assembled HP Fastener and Polymer Seam Plate. Applicable to wood (minimum $\frac{1}{2}$ " [12mm] CDX plywood) and steel decks (22-gauge [0.76 mm] or heavier).

Sizes Available:

2" – 12" (1" Increments)

Size & Quantity Per Box:

2": 500; 3": 450; 4", 5": 400; 6": 350; 7", 8": 300; 9": 250; 10"– 12": 200

OVAL BARBED PLATE



Along with the appropriate fastener, used to secure Sure-Flex membranes to wood (minimum $\frac{1}{2}$ " [12mm] CDX plywood) and steel decks (22-gauge [0.76 mm] or heavier).

Sizes Available:

1 $\frac{1}{2}$ " x 2 $\frac{3}{4}$ " Oval

Quantity Per Box: 500

- Sure-Seal, Sure-White, and Sure-Tough EPDM
- Sure-Weld TPO
- Sure-Flex PVC

Fasteners & Plates

INDUCTION WELDING PLATE



Used for Sure-Weld and Sure-Flex systems. A 3" round specially coated plate is used with HP-X Fasteners and the corresponding induction welding tool for membrane and insulation attachment.

OPTIONS INCLUDE:

Rhinobond Induction Welding TPO Plate & PVC Plate
isoWELD Induction Welding TPO Plate & PVC Plate

Sizes Available:

3" diameter

Quantity Per Box: 500

HP POLYMER SEAM PLATE



Used in conjunction with HP Fasteners to mechanically fasten Sure-Tough membrane and RUSS over steel decks. (22-gauge [0.76mm] or heavier)

Sizes Available:

2" diameter

Quantity Per Box: 1,000

HP-XTRA POLYMER SEAM PLATE

Also Available (not shown)

Used in conjunction with HP-XTRA Fasteners to mechanically fasten Sure-Tough EPDM membranes over steel decks.

Sizes Available:

2 ³/₈" diameter

Quantity Per Box: 1,000

SEAM FASTENING PLATE



A 2" diameter metal plate, Applicable with HPV, MP 14-10 and CD-10 fasteners, used for insulation attachment on MF Systems or membrane securement at angle changes on Adhered Systems in conjunction with the appropriate Carlisle fastener.

Sizes Available:

2" diameter

Quantity Per Box: 1,000

PIRANHA PLATE



Along with the appropriate fastener, used to secure Sure-Weld and Sure-Flex membranes over wood (minimum 1 ⁵/₃₂" [12mm] CDX plywood), steel (22-gauge [0.76 mm] or heavier), and concrete decks.

Sizes Available:

2 ³/₈" diameter

Quantity Per Box: 1,000

HP-XTRA PIRANHA PLATE

Also Available (not shown)

Used with HP-XTRA Fasteners to secure Sure-Weld and Sure-Flex membranes to wood (minimum 1 ⁵/₃₂" [12mm] CDX plywood), steel (22-gauge [0.76 mm] or heavier) decks.

Sizes Available:

2 ³/₈" diameter

Quantity Per Box: 1,000

INSULATION FASTENING PLATE



Along with the appropriate fastener, used for insulation securement over wood (minimum 1 ⁵/₃₂" [12mm] CDX plywood), steel (22-gauge [0.76 mm] or heavier), and concrete decks. Available in steel and plastic versions.

Sizes Available:

3" diameter

Quantity Per Box: 1,000

LITE-DECK METAL PLATE



Used in conjunction with HP Lite-Deck Fasteners for insulation attachment to gypsum, cementitious wood fiber (Tectum), and lightweight concrete decks.

Sizes Available:

3" diameter

Quantity Per Box:

500

Fasteners & Plates

TERMINATION BAR (ALUMINUM)



Extruded aluminum bar that is designed for securing and sealing compression type flashing terminations. The bar features a top edge for ease of applying Carlisle's Lap Sealant for EPDM installations or Universal Single Ply Sealant for TPO installations. The bar can be easily cut to any desired length.

Sizes Available:

1" wide x 10' long

Quantity Per Box: 50 pcs; 500 Linear Feet

METAL FASTENING BAR



Galvalume™-coated metal bar used to mechanically fasten EPDM membranes. The bar can be easily cut to desired length. Installed using HP-X Fasteners.

Sizes Available:

1" wide x 10' long

Size & Quantity Per Box:

50 pcs; 500 Linear Feet

TERM BAR NAIL-IN



Used with Carlisle's Termination Bar or Seam Fastening Plates to secure membrane to concrete block, brick, or structural concrete walls. A zinc-plated steel pin provides excellent corrosion resistance while the zinc alloy body provides excellent holding power.

Sizes Available:

1 1/4"

Quantity Per Box: 1,000

PURLIN FASTENER



Used with Carlisle's Metal Retrofit Roofing System to secure membrane and RUSS to structural steel purlins. Provides superior back-out resistance in standard 16-gauge Purlins.

Sizes Available:

3 3/4", 4 3/4", 5 3/4", 7", 8"

Quantity Per Box: 1,000

ACCUTRAC PLATE (INSULATION)



AccuTrac Plates are 3" square flat- or recessed-bottom plates made of Galvalume-coated steel. Used to fasten insulation with the AccuTrac Tool.

Sizes Available:

3"

Quantity Per Box: 1,000

SECURFAST™ INSULATION FASTENING PLATE



Designed for SECURLOCK® securement under Sure-Seal, Sure-White, Sure-Flex, or Sure-Weld roofing systems. Plates are stamped from Galvalume-coated steel for long-term protection against corrosion.

Sizes Available:

2 5/8"

Quantity Per Box: 1,000

- Sure-Seal, Sure-White, and Sure-Tough EPDM
- Sure-Weld TPO
- FleeceBACK
- Sure-Flex PVC
- Multiple-Ply Systems
- Low-VOC Product

Adhesives, Primers, and Sealants

CAV-GRIP™ III LOW-VOC ADHESIVE/PRIMER



Carlisle's CAV-GRIP III Low-VOC Aerosol Contact Adhesive/Primer can be used for a variety of applications: membrane attachment adhesive for standard Sure-Weld TPO and Sure-Seal EPDM membranes, adhering FleeceBACK membranes to vertical walls, enhancing the bond between Carlisle's VapAir Seal™ 725TR and various substrates, and priming unexposed asphalt prior to applying Flexible FAST Adhesive for insulation attachment.

Coverage Rate: See Product Data Sheet.

Packaging:

40# aerosol cylinder – Product Number: 329902

85# aerosol cylinder – Product Number: 332659

Shelf Life: 12 months unopened container

90-8-30A EPDM BONDING ADHESIVE



A high-strength, solvent-based contact adhesive that allows quick bonding of cured EPDM membranes to various substrates. Designed for bonding Sure-White, Sure-Seal, Sure-Tough, and Epichlorohydrin membranes to approved substrates.

Coverage Rate: 60 square feet per gallon of finished surface.

Packaging: 5-gallon pail

Product Number: 302124

Shelf Life: 12 months

LOW-VOC BONDING ADHESIVE*



A high-strength, solvent-based contact adhesive that allows bonding of all EPDM and TPO membranes to various porous and non-porous substrates. This product meets the <250 gpl VOC content requirements of the OTC Model Rule for Single-Ply Roofing Adhesives.

Coverage Rate: 60 square feet per gallon of finished surface.

Packaging: 5-gallon pail

Product Number: 303090

Shelf Life: 12 months

LOW-VOC BONDING ADHESIVE 1168*



A high-strength, solvent-based contact adhesive that allows bonding of all EPDM and Sure-Weld TPO membrane to various porous and non-porous substrates. This product meets the requirements for SCAQMD regulations.

Coverage Rate: 60 square feet per gallon of finished surface.

Packaging: 5-gallon pail

Product Number: 318847

Shelf Life: 12 months

SURE-WELD TPO BONDING ADHESIVE



A high-strength, solvent-based contact adhesive that allows bonding of Sure-Weld membrane to various porous and non-porous substrates.

Coverage Rate: 60 square feet per gallon of finished surface.

Packaging: 5-gallon pail

Product Number: 302099

Shelf Life: 12 months

Adhesives, Primers, and Sealants

EPDM X-23 LOW-VOC BONDING ADHESIVE



A high-strength, solvent-based contact adhesive that bonds EPDM membranes to various porous and non-porous substrates. This product meets the <250 gpl VOC content requirements of the OTC Model Rule for Single-Ply Roofing Adhesives.

Coverage Rate: 60 square feet per gallon of finished surface.

Packaging: 5-gallon pail
Product Number: 324002
Shelf Life: 12 months

AQUA BASE 120 BONDING ADHESIVE



A semi-pressure-sensitive, water-based adhesive. This product may be used as a two-sided contact adhesive with EPDM and TPO membranes. Also compatible with FleeceBACK EPDM and FleeceBACK TPO membranes.

Coverage Rate: 120 square feet per gallon of finished surface. (May vary due to conditions such as insulation type or wall construction.)

Packaging: 5-gallon pail
Product Number: 307431
Shelf Life: 12 months

LOW-VOC HYDROBOND™ ADHESIVE



A water-based, wet lay-in, one-sided dispersion adhesive used to adhere all Sure-Flex PVC smooth-backed and FleeceBACK membranes to a variety of substrates. Complies with the California Clean Air Act of 1988 (updated in 1997) and California Air Quality Control District's listing of VOC limitations. Meets the requirements of the OTC Model Rule for Single-Ply Roofing Adhesives. *Cannot be used with KEE HP, TPO or EPDM smooth-backed membrane.*

Coverage Rate:
 Smooth-backed membrane:
 Roller application – 100 square feet per gallon of finished surface.
 Spray application – 133 square feet per gallon of finished surface.

FleeceBACK membrane:
 Roller application – 100 square feet per gallon over polyiso, DensDeck, DensDeck Prime, SECURock, and plywood.
 Spray application – 100 square feet per gallon over DensDeck and 133 square feet per gallon over polyiso, DensDeck Prime/SECURock, and plywood.

Packaging: 5-gallon pail
Product Number: 335186
Shelf Life: 12 months

WEATHERED MEMBRANE CLEANER



Used to clean both new and in-service EPDM and TPO membranes prior to seaming or application of Pressure-Sensitive (PS) products. Helps to loosen and remove dirt and other contaminants from the surface of the membranes and leaves a suitable surface for application of adhesive or primer. Please refer to the Product Data Sheets for specific instructions for EPDM and TPO applications.

Packaging:
 (2) 1-gallon closed-top cans,
 5-gallon closed-top pail

1-gallon cans
Product Number: 304066
 5-gallon pail
Product Number: 302074

Coverage Rate: 400 square feet (one surface) per gallon.

LOW-VOC PVC STEP 1 ACTIVATOR



A high-strength, solvent-based activator that allows PVC Pressure-Sensitive Cover Strip to be bonded to PVC or KEE HP membranes. Meets the <250 gpl VOC content requirements of the OTC Model Rule.

Coverage Rate: As high as 250–300 square feet per gallon.

Packaging: (2) 1-gallon cans
Product Number: 332651
Shelf Life: 12 months

- Sure-Seal, Sure-White, and Sure-Tough EPDM
- Sure-Weld TPO
- FleeceBACK
- Sure-Flex PVC
- Multiple-Ply Systems
- Low-VOC Product

Adhesives, Primers, and Sealants

LOW-VOC PVC STEP 2 PRIMER



A high-solids-content, clear Polymer-based primer used to prepare KEE HP and PVC membrane to be bonded to PVC Pressure Sensitive Cover Strip. Meets the <250 gpl VOC content requirements of the OTC Model Rule.

Coverage Rate: As high as 700 square feet per gallon.

Packaging: (2) 1-gallon cans

Product Number: 332652

Shelf Life: 6 months

PVC STEP 2 PRIMER



A high-solids-content, clear Polymer-based primer used to prepare KEE HP and PVC membrane to be bonded to PVC Pressure Sensitive Cover Strip.

Coverage Rate: As high as 200–250 square feet per gallon.

Packaging: (2) 1-gallon cans

Product Number: 332653

Shelf Life: 12 months

LOW-VOC UN-TACK ADHESIVE REMOVER AND CLEANER



Designed for use with TPO and EPDM membranes, Low-VOC UN-TACK Cleaner is used to remove adhesives and primers from a variety of surfaces including single-ply membranes, accessories, metal, plastic, rubber, and glass. May also be used to flush CAV-GRIP III Hoses and Guns prior to storage.

Coverage Rate: 250-300 FT²/Cylinder surface area to be cleaned.

Packaging:

8# Aerosol Cylinder

Product Number: 330793

SOLVENT-FREE EPDM BONDING ADHESIVE



A high-strength, low-odor, polymer-based adhesive that allows fast installation of EPDM membranes and cured flashings to various substrates. This adhesive is specially designed for installing reinforced and non-reinforced EPDM membranes.

Coverage Rate: 100 square feet per gallon of finished surface.

Packaging: 5-gallon pail

Product Number: 318127

Shelf Life: 6 months

LOW-VOC PVC BONDING ADHESIVE



A high-strength, solvent-based contact adhesive that allows bonding of PVC and KEE HP membranes to various porous and non-porous substrates. Meets the <250 gpl VOC content requirements of the OTC Model Rule for Single-Ply roofing adhesives.

Coverage Rate: 60 square feet per gallon of finished surface.

Packaging: 5-gallon pail

Product Number: 309126

Shelf Life: 12 months

Adhesives, Primers, and Sealants

PVC AND KEE HP MEMBRANE CLEANER



This cleaner is specially formulated to clean both new and in-service Sure-Flex PVC and KEE HP membranes.

Coverage Rate: 400 square feet (one surface) per gallon.

Packaging:
5-gallon closed-top pail

Product Number: 329729

FLEXIBLE FAST ADHESIVE



A low-rise, two-component, VOC-free, energy-absorbing, impact-resistant adhesive used to adhere FleeceBACK membranes and insulation boards to various substrates for a totally non-penetrating system application. Flexible FAST adhesive provides a wider window of temperature workability (25°F - 120°F).

Coverage Rate: See Product Data Sheet.

Packaging:

50-gallon drums – Part A – Product Number: 310472

50-gallon drums – Part B – Product Number: 310473

15-gallon drums – Part A – Product Number: 317329

15-gallon drums – Part B – Product Number: 317331

5-Gallon Jug – Part A – Product Number: 329722

5-Gallon Jug – Part B – Product Number: 329723

Dual Tank – Part A – Product Number: 328043

Dual Tank – Part B – Product Number: 328044

Dual Cartridge – Product Number: 322958

Shelf Life: 12 months (Part A and Part B)

COLD APPLIED ADHESIVE



An asphalt-modified polyether, one-sided, wet lay-in adhesive designed to adhere to FleeceBACK AFX membranes and Carlisle's modified base sheet.

Coverage Rate: 67 square feet per gallon of finished surface for smooth surfaces. 50 square feet per gallon of finished surface for uneven surfaces.

Packaging: 5-gallon pail

Product Number: 319689

Shelf Life: 9 months when stored below 90°F

LOW-VOC PRIMER



Designed for one-step cleaning and priming of EPDM and TPO surfaces prior to the application of pressure-sensitive products. It is a Low-VOC product that is ideal for use where environmental issues are a concern.

Coverage Rate: As high as 700 square feet per gallon with TPO or Kleen EPDM membrane. Approx. 250 square feet per gallon with dusted EPDM membrane.

Packaging:

(6) 1-gallon cans – Product Number: 329160

3-gallon pails – Product Number: 332714

Shelf Life: 12 months

HP-250 EPDM PRIMER



A solvent-based product designed for cleaning and priming EPDM membranes prior to the application of pressure-sensitive products.

Coverage Rate: As high as 450 square feet per gallon with Kleen EPDM membrane. Approx. 250 square feet per gallon with dusted EPDM membrane.

Packaging:

(6) 1-gallon cans – Product Number: 302070

3-gallon pails – Product Number: 332683

Shelf Life: 12 months

- Sure-Seal, Sure-White, and Sure-Tough EPDM
- Sure-Weld TPO
- FleeceBACK
- Sure-Flex PVC
- Multiple-Ply Systems

Adhesives, Primers, and Sealants

CCW-702LV PRIMER



A low-VOC, solvent-based, high-tack adhesive designed to promote maximum adhesion of Carlisle 725TR Air and Vapor Barrier to approved substrates. Also used as a surface prep to promote adhesion of FAST Adhesive.

Coverage Rate: 300-350 square feet per gallon.

Packaging:
5-gallon pails

Product Number: 316148

Shelf Life: 12 months
unopened container

TPO PRIMER



A high-solids, clear polymer-based primer used to prepare TPO membrane prior to the application of Pressure-Sensitive (PS) products.

Coverage Rate: 200 – 250 square feet (one surface) per gallon.

Packaging: (6) 1-gallon cans

Product Number: 310471

Shelf Life: 12 months unopened can

CCW-702 PRIMER



A solvent-based, high-tack adhesive designed to promote maximum adhesion of Carlisle 725TR Air and Vapor Barrier to approved substrates. Also used as a surface prep to promote adhesion of FAST Adhesive.

Coverage Rate: 300-350 square feet per gallon.

Packaging:
5-gallon pails

Product Number: 305363

Shelf Life: 12 months
unopened container

SPLICE CEMENT



Designed for splicing cured-to-cured EPDM membranes and non-PS flashings, this high-strength, solvent-based contact cement allows quick bonding of flashing, sheeting, and cured rubber seams. Formulated for application with a ½" medium nap roller and/or a ½"-thick paint brush, the versatile tack time allows large areas to be coated and adhered at one time.

Coverage Rate: 100 square feet per gallon.

This product is for use on non-warranted projects only.

Packaging: (6) 1-gallon
cans – Black and White

Product Number:
302342 – Black
302147 – White

Shelf Life:
12 months – Black
9 months – White

LIQUISEAL® LIQUID FLASHING



A two-component, polyurethane-based system that creates a cold-applied liquid flashing that is compatible with all Carlisle EPDM, TPO, PVC and KEE HP membranes. LIQUISEAL Liquid Flashing is ideal for flashing oddly shaped penetrations and tying together dissimilar roofing systems without building a knee wall or impeding drainage.

Coverage Rate: 13.6 square feet per gallon.

Packaging: (8) ½ gal/carton,
1-gallon pails

Product Number:
330891 – White ½ gallon
330892 – White 1-gallon
333301 – Gray ½ gallon
333302 – Gray 1-gallon

Shelf Life: 12 months
unopened container

Adhesives, Primers, and Sealants

WATER CUT-OFF MASTIC



A one-component, low-viscosity, self-wetting, butyl-blend mastic used in conjunction with roofing and waterproofing systems. It is used as a sealing agent between various membranes and substrates for compression-type terminations.

Coverage Rate: 10' per tube, using a $\frac{7}{16}$ " bead.

Packaging: 25 Tubes/carton

Product Number: 319621

Shelf Life: 12 months
unopened container

SURE-SEAL AND SURE-WHITE LAP SEALANTS



Gun-consistency material used to seal the exposed cut edge of Sure-Tough membranes, and the edges of Elastoform Flashing.

Coverage Rate: 22' per tube using a $\frac{5}{16}$ " bead.

Packaging: 25 Tubes/carton

Product Number:

302174 – Black

302172 – White

Shelf Life: 12 months

CUT-EDGE SEALANT



TPO CUT-EDGE SEALANT

A clear, free-flowing polymeric material designed for sealing cut edges (exposed fabric) of Sure-Weld TPO membrane.

Coverage Rate: 225'-275' per 16-oz. bottle when applied with $\frac{1}{8}$ " bead.

PVC CUT-EDGE SEALANT

Also available (not shown)

PVC Cut-Edge Sealant is used for sealing cut edges (exposed fabric) of Sure-Flex PVC membrane. Cut-Edge Sealant is clear in color.

Packaging: (12) 16-oz.
Bottles/carton

Product Number: 307754

Shelf life: 12 months

Coverage Rate: 225'-275' per bottle when applied with $\frac{1}{8}$ " bead.

Packaging: (8) 16-oz.
Bottles/carton

Product Number:
303436 – Clear
327530 – Low-VOC

Shelf Life: 12 months

UNIVERSAL SINGLE-PLY SEALANT



A 100%-solids, solvent-free, one-part, polyether sealant that provides a weathertight seal to a variety of building substrates.

Coverage Rate: 25' per tube or 600' per carton using a $\frac{1}{4}$ " bead.

Packaging: 24 Tubes/carton

Product Number: 310131

Shelf Life: 12 months
unopened container
(@ <90°F)

- Sure-Seal, Sure-White, and Sure-Tough EPDM
- Sure-Weld TPO
- FleeceBACK
- Sure-Flex PVC
- Multiple-Ply Systems

Adhesives, Primers, and Sealants

ONE-PART POURABLE SEALER



Packaging: (4) 1/2-gallon pouches per bucket

Product Number:

307647 – Black

307603 – White

Shelf Life: 12 months unopened container

A single-component, moisture-curing, elastomeric polyether sealant that is compatible with Carlisle's EPDM, TPO, and PVC membranes. Designed to provide a flexible, durable and long-lasting seal around hard-to-flash penetrations. The sealant's consistency allows for quick pocket filling without mixing. Unused sealant is usable for up to 30 days if pouch is resealed with original cap.

Coverage Rate: 122 cubic inches of volume per 1/2-gallon pouch.

SURE-SEAL TWO-PART POURABLE SEALER



Packaging:

Part A – (2) 1-gallon pails/ctn.

Part B – (2) 1-pint cans/ctn.

Product Number:

302084

Shelf Life: 12 months unopened container

A two-component, solvent-free, polyurethane-based product compatible with Carlisle's Sure-Seal and Sure-White membranes. Designed to provide a flexible, durable and long-lasting seal around hard-to-flash penetrations. Can also be used to provide a permanent tie-in between Sure-Seal membranes and a built-up roof surface, and for attaching lightning rod bases and ground cable clips to the membrane surface.

Coverage Rate: 231 cubic inches of volume per properly mixed gallon.

Air & Vapor Barriers

VAPAIR SEAL™ 725TR



A 40-mil composite consisting of 35 mils of self-adhering rubberized asphalt laminated to a 5-mil woven polypropylene film. Used as an air and vapor barrier/temporary roof, one-piece poly release liner prevents the material from bonding to itself in the roll and is easily removed for installation. May be used as a temporary roof for up to 120 days. Common substrates include concrete, DensDeck®, and SECURLOCK®.

Coverage Rate: 325 FT²/roll

Packaging: 39" x 100'

Thickness: 40 mils

Weight: 67 lbs/roll

Product Number: 330170

Shelf Life: 12 months unopened container

VAPAIR SEAL MD



A 15-mil composite reinforced aluminum-coated poly with a self-adhering SBS. Used as an air and vapor barrier direct to metal decking. Meets UL 1256 and FM 4470 internal fire ratings. Reinforced aluminum-coated poly stands up to the toughest roof traffic. This product's self-healing characteristics allow for fastening penetration while maintaining IECC air leakage requirements of 0.04 cfm.

Coverage Rate: 458 FT²/roll

Packaging: 42½" x 131'

Thickness: 15 mils

Weight: 28 lbs/roll

Product Number: 321931

Shelf Life: 12 months unopened container

SUREMB 90 BASE PLY



A 90-mil SBS-modified asphalt base sheet. Can be used in multi-ply roofing systems as an air and vapor barrier, or as a temporary roof for up to 60 days. This product is fiberglass-reinforced and meets or exceeds requirements of ASTM 6363 Type 1. When used as an air and vapor barrier, suitable substrates include concrete (primer required), DensDeck Prime, and SECURLOCK.

Coverage Rate: 161 FT²/roll (excluding lap)

Packaging: 39 ⅝" x 49' 1"

Thickness: 90 mils

Weight: 96 lbs/roll

Product Number: 307253

Shelf Life: 12 months

SUREMB 90TG BASE PLY AND SUREMB 120TG BASE PLY



Premium smooth-surfaced SBS torch-applied membranes reinforced with fiberglass mat. Can be used as a base ply in multi-ply systems, as an air and vapor barrier, or as a temporary roof for up to 60 days. Excellent for low temperature applications when use of peel-and-stick membranes may not be possible. Ideal substrates include primed concrete and primed SECURLOCK.

SureMB 90TG Base

Coverage Rate: 161 FT²/roll (excluding lap)

Packaging: 39 ⅝" x 49' 1"

Thickness: 90 mils

Weight: 95 lbs/roll

Product Number: 323887

Shelf Life: 12 months unopened container

SureMB 120TG Base Ply

Coverage Rate: 107 FT²/roll (excluding lap)

Packaging: 39 ⅝" x 32' 9"

Thickness: 120 mils

Weight: 85 lbs/roll

Product Number: 323313

Shelf Life: 12 months unopened container

Insulation Reference

SECURSHIELD®

A rigid roof insulation panel composed of a closed-cell polyisocyanurate foam core bonded to high performance **coated glass facers (CGF)**. Ideal for use in adhered membrane systems. Provides a direct to combustible deck UL Class A fire rating at 1" thickness.

Sizes: 4' x 4' and 4' x 8'

Thicknesses: ½" to 4½"

Compressive Strengths: 20 and 25psi



SECURSHIELD HD

A rigid roof insulation panel composed of ½" high-density, closed-cell polyisocyanurate foam core bonded to a premium performance **coated glass facer (CGF)** specifically designed for use as a cover board. Provides 5 times the R-value at one-fifth the weight of traditional gypsum cover boards. Achieves a UL Class A fire rating direct to combustible deck.

Sizes: 4' x 4' and 4' x 8'

Thickness: ½"

Compressive Strength: 109psi max



SECURSHIELD HD PLUS

A rigid roof insulation panel composed of a ½" high-density, closed-cell polyisocyanurate foam core bonded to premium-performance coated glass facers (CGF). SecurShield HD PLUS is specifically designed for use as a cover board. Provides an **FM 1-90 wind uplift rating with only 8 fasteners** per 4' x 8' board.

Sizes: 4' x 4' and 4' x 8'

Thicknesses: ½"

Compressive Strengths: 109psi max



INSULBASE® POLYISO

A rigid roof insulation panel composed of a closed-cell polyisocyanurate foam core bonded to **glass-reinforced felt (GRF) facers**. UL and FM approved for direct application over steel decks, polyiso provides the highest R-value per inch of any commercially available insulation product.

Sizes: 4' x 4' and 4' x 8'

Thicknesses: ½" to 4½"

Compressive Strengths: 20 and 25psi



INSULBASE® HD

A rigid-roof insulation cover board composed of a high-density closed-cell polyisocyanurate foam core bonded to **glass-reinforced felt (GRF) facers**. Securshield HD is specifically designed for use as a cover board in mechanically-attached systems only.

Sizes: 4' x 4' and 4' x 8'

Thicknesses: ½"

Compressive Strengths: 109psi max



RAPIDLOCK POLYISO

InsulBase RL™ and **SecurShield RL** are standard density polyisocyanurate roof boards specially designed to act as the hook in the RapidLock (hook and loop) system.

InsulBase RL utilizes a **GRF facer** and **SecurShield RL** a **CGF facer**.

SecurShield HD RL is a high-density rigid roof polyisocyanurate board bonded to **coated-glass (CGF) facers**.

InsulBase RL and SecurShield RL

Size: 4' x 8'

Thickness: 2.0" and 2.6"

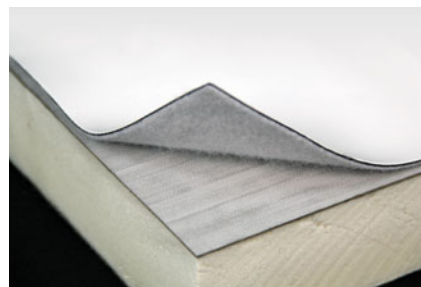
Compressive Strengths: 20psi

SecurShield HD RL

Size: 4' x 8'

Thickness: 0.5"

Compressive Strength: 109psi max



Insulation Reference

INSULBASE NH AND SECURSHIELD NH

A Living Building Challenge (LBC) "Red List Free" rigid roof insulation panel composed of a closed-cell polyisocyanurate foam core bonded on each side to fiber-reinforced paper facers. InsulBase NH contains **zero halogenated flame retardants**.

Sizes: 4' x 4' and 4' x 8'

Thickness: ½" to 4½"

Compressive Strength: 20 and 25psi



InsulBase NH



SecurShield NH

SECURSHIELD HD COMPOSITE

A unique composite insulation panel comprised of ½" high-density polyiso cover board bonded during the manufacturing process to SecurShield rigid polyiso roofing insulation. Eliminates the need for a separate cover board, reduces inter-ply adhesives and saves labor on the roof. **A single product solution.**

Sizes: 4' x 4' and 4' x 8'

Thicknesses: 1½" to 4½"

Compressive Strengths: 20 psi (SecurShield base layer) and 109psi max (SecurShield HD cover board)



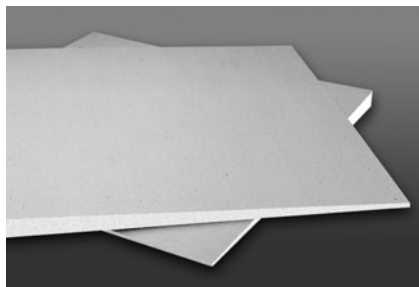
TAPERED POLYISO

A sloped, rigid roof insulation panel composed of a closed-cell polyisocyanurate foam core bonded to a coated glass or fiber-reinforced facer. Designed to promote **positive drainage** and **prevent ponding water**.

Sizes: 4' x 4'

Thicknesses: ½" to 4½" (multiple layers utilized for increased thicknesses)

Compressive Strengths: 20 and 25psi



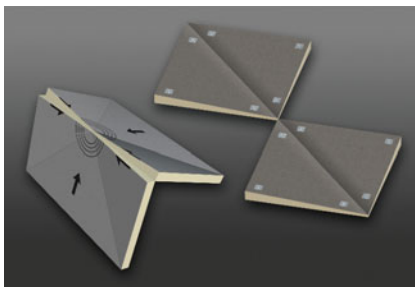
TAPERED ACCESSORIES

Hinged Target Sumps and Pre-Cut Hips and Valleys ship ready to install, **require no field cuts** and **save valuable time on the roof**. Multiple thicknesses and slopes available to accommodate specific job conditions with no waste, thus reducing disposal fees.

Sizes: 4' x 4' (Hips & Valleys) and 8' x 8' (Hinged Sumps)

Thicknesses: ½" to 4½" (multiple layers utilized for increased thicknesses)

Compressive Strengths: 20 and 25psi



STORMBASE® POLYISO

A rigid roof insulation composite panel composed of a closed-cell polyisocyanurate foam core bonded to a glass-reinforced felt (GRF) facer on one side and 7/16" **oriented strand board (OSB)** on the other.

Sizes: 4' x 4' (routed 3 sides) and 4' x 8' (routed 4 sides)

Thicknesses: 1½" to 4½"

Standard Thickness: 1½", 2", 2½", 3", and 4"



Insulation Reference

CARLISLE FLAT EPS

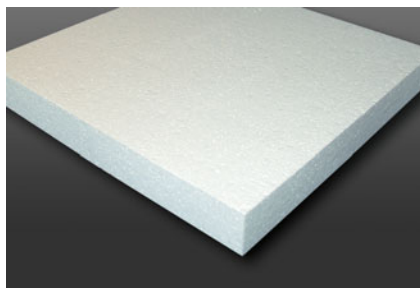
Engineered rigid insulation made of high-performance, water-resistant expanded polystyrene (EPS). Meets ASTM C578 requirements, includes extensive UL and FM ratings, and can be applied direct to metal decks.

Sizes: 4' x 4' or 4' x 8'; custom sizes and tapered panels available

Thicknesses: 1/4" to 40" per panel

Densities: 1 to 3 lb/ft³

Compressive Strength: 10 to 60psi



CARLISLE TAPERED EPS

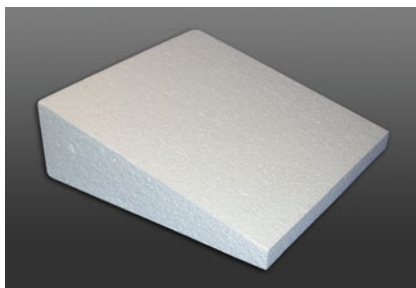
Tapered engineered EPS insulation available in virtually any slope. Can be combined with Carlisle polyiso for tapered hybrid roof systems. Design assistance is available from Carlisle's Tapered Design Team. Custom saddles and crickets also available.

Slope: Virtually any slope

Thickness: 1/2" to 40"

Densities: 1 to 3 lb/ft³

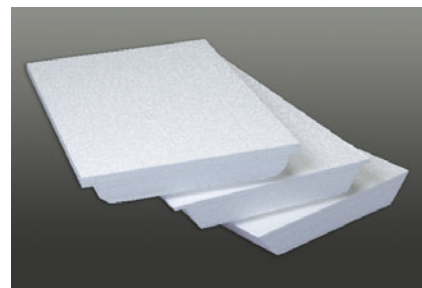
Compressive Strength: 10 to 60psi



CARLISLE EPS FLUTE-FILL

Custom-cut, engineered EPS flute-fill insulation manufactured for virtually any standing seam profile. Meets ASTM C578 requirements and includes extensive UL and FM ratings, including direct to metal deck installations.

Thickness, Shape and Size: Custom manufactured to fit any roof profile



CHANNELDRY®

Carlisle's high-performance ChannelDry insulation is composed of lightweight, closed-cell expanded polystyrene meeting the requirements of ASTM C578 Type IX. ChannelDry has excellent dimensional stability, compressive strength, and water-resistant properties. ChannelDry is designed to be mechanically fastened directly to concrete decks. The use of ChannelDry in conjunction with one-way and two-way relief vents allows the installation of the roof system to begin upon structural cure of concrete.

Sizes: 4' x 4'

Thickness: 2"

Compression Strength: 25psi



R-TECH® FANFOLD RECOVER BOARD

High-performance water-resistant facers laminated to Carlisle engineered EPS. Code-approved for recover applications and compatible with both light- and dark-colored single-ply membranes. Five times lighter than traditional cover boards with a coverage rate of 200 sq. ft. per piece. Saves time and labor on the roof.

Sizes: 2' x 4' (folded), 4' x 50' (unfolded)

Thicknesses: 3/8", 1/2", 3/4"



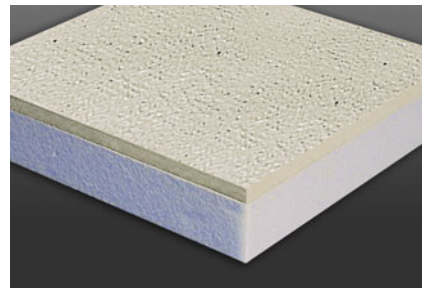
CARLISLE HD EPS COMPOSITE

High-density polyiso cover board (1/2") laminated to Carlisle's engineered EPS. Five times lighter than traditional cover boards. Approved for both adhered and mechanically attached systems. Provides enhanced protection against severe weather and hail and meets Title 24 requirements for continuous insulation on combustible decks.

Sizes: 4' x 4' or 4' x 8'; custom sizes and tapered panels available

Thickness: 1 1/2" to 6" (including 1/2" HD polyiso cover board)

Densities: 1 to 3 lb/ft³



Insulation Reference

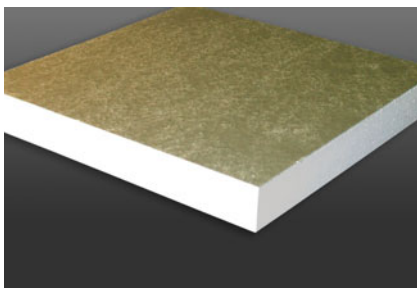
CARLISLE SP EPS

Premium coated-glass-faced insulation approved for mechanically attached or self-adhering systems without a slip sheet. Provides up to R-30 in a single layer.

Sizes: 4' x 4' or 4' x 8'; custom sizes and tapered panels available

Thicknesses: ¼" to 6"

Densities: 1.25 to 3 lb/ft³



CARLISLE INSULLAM

OSB, plywood, or gypsum board laminated to Carlisle's engineered EPS. Approved for both adhered and mechanically attached systems. Provides enhanced protection against severe weather and hail. Can be utilized as a nail base, is available vented and with a wide assortment of cover boards.

Sizes: 4' x 4' or 4' x 8'

Thickness: 1½" to 7"

Laminate: OSB 7/16" and 5/8"; plywood 5/8"; gyp. thickness varies



EPDM SYSTEMS

	BALLASTED	ADHERED	MECHANICALLY FASTENED	FLEECEBACK	AFX	COVERAGE RATE OR AVAILABLE SIZES	PACKAGING
MEMBRANES							
Sure-Seal Non- Reinforced 45-mil EPDM	✓						10'-50' x 50'-150'
Sure-Tough Reinforced 45-mil EPDM		✓	✓				6.5'-10' x 50'-100'
Sure-Seal Non-Reinforced 60- and 90-mil EPDM	✓	✓		✓	✓		7'- 50' x 50'- 200'
Sure-White Non-Reinforced 60- and 90-mil White EPDM		✓		✓	✓		10'-20' x 100' per roll
Sure-Tough Reinforced 60- and 75-mil EPDM	✓	✓	✓				6.5'- 10' x 50'- 100' per roll
Sure-Seal FleeceBACK EPDM		✓		✓		100-mil, 115-mil, 145-mil	5' x 40', 10' x 50', 10' x 100'
Sure-White FleeceBACK EPDM		✓		✓		100-mil, 115-mil, 145-mil	5' x 40', 10' x 50', 10' x 100'
Sure-Seal FleeceBACK AFX EPDM		✓	✓		✓	90-mil, 105-mil	4'.5" x 50', 10' x 50', 10' x 100'
Sure-White FleeceBACK AFX EPDM		✓	✓		✓	105-mil	4'.5" x 50'
FleeceBACK RL™ EPDM		✓		✓		115-mil	10' x 50', 10' x 100'
ADHESIVES & SEALANTS							
Low-VOC Primer	✓	✓	✓	✓	✓	250 sq. ft. per gallon (dusty membrane)	(6) 1-gallon cans per case
HP-250 Primer	✓	✓	✓	✓	✓	250 sq. ft. per gallon (dusty membrane)	(6) 1-gallon cans per case
90-8-30A EPDM Bonding Adhesive		✓				60 sq. ft. per gallon	5-gallon pail
Solvent-Free EPDM Bonding Adhesive		✓				100 sq. ft. per gallon	5-gallon pail
Flexible FAST Adhesive				✓		See PDS	Multiple
Aqua Base 120 Bonding Adhesive		✓		✓		100-120 sq. ft. per gallon	5-gallon pail
Cold Applied Adhesive					✓	67 sq. ft. per gallon	5-gallon pail
EPDM X-23 Low-VOC Bonding Adhesive		✓				60 sq. ft. per gallon	5-gallon pail
Low-VOC Bonding Adhesive		✓				60 sq. ft. per gallon	5-gallon pail
Sure-Seal Lap Sealant	✓	✓	✓	✓	✓	22' per tube	25 tubes per carton
Sure-White Lap Sealant	✓	✓	✓	✓	✓	22' per tube	25 tubes per carton
One-Part Pourable Sealer (Black/White)	✓	✓	✓	✓	✓	488 in³ per gallon	(4) ½-gallon pouches/bucket
Weathered Membrane Cleaner	✓	✓	✓	✓	✓	400 sq. ft. per gallon	(2) 1-gallon cans or (1) 5-gallon pail
Water Cut-Off Mastic	✓	✓	✓	✓	✓	10' per tube	25 tubes per carton
Pressure-Sensitive SecurTAPE	✓	✓	✓	✓	✓	3" x 100', 6" x 100'	3" – 4 rolls per carton, 6" – 2 rolls per carton

EPDM SYSTEMS

	BALLASTED	ADHERED	MECHANICALLY FASTENED	FLEECEBACK	AFX	COVERAGE RATE OR AVAILABLE SIZES	PACKAGING
FLASHINGS							
Pressure-Sensitive Elastoform Flashing (Black/White)	✓	✓	✓	✓	✓	6" x 100', 9" x 50', 12" x 50"	6" - 2 rolls per carton 9" & 12" - 1 roll per carton
Pressure-Sensitive Cured Coverstrip (Black/White)	✓	✓	✓	✓	✓	6" x 100', 9" x 100', 12" x 50'	6" - 2 rolls per carton 9" & 12" - 1 roll per carton
Pressure-Sensitive Overlayment Strip (Black)	✓	✓	✓	✓	✓	6" x 100', 9" x 100'	6" - 2 rolls per carton 9" - 1 roll per carton
Pressure-Sensitive RUSS (Black/White)	✓	✓	✓			6" x 100', 9" x 100'	6" - 2 rolls per carton 9" - 1 roll per carton
Pressure-Sensitive Pipe Seals (Black/White)	✓	✓	✓	✓	✓	½" – 3", 1" – 6"	10 per carton
Pressure-Sensitive Pourable Sealer Pockets (Black/White)	✓	✓	✓	✓	✓	Black – 4", 6", 8" White – 6" only	12 per carton
Pressure-Sensitive Inside/Outside Corners (Black/White)	✓	✓	✓	✓	✓	7" x 9"	20 per carton
Pressure-Sensitive Curb Flashing (Black/White)	✓	✓	✓	✓	✓	20" x 50', with 6" tape	1 roll per carton
Fully Pressure-Sensitive Curb Flashing (Black)	✓	✓	✓	✓	✓	20" x 50'	1 roll per carton
Pressure-Sensitive T-Joint Covers (Black)	✓	✓	✓	✓	✓	6" & 12"	20 per carton
Pipe Supports	✓	✓	✓	✓	✓	Mini: ½" – 1½" Small: ¾" – 2" Large: 2½" – 5"	Mini & small 20 per carton; large 10 per carton
ACCESSORIES							
Pressure-Sensitive Molded Walkway Pads (Black/White)		✓	✓	✓	✓	30" x 30"	50/pallet
Interlocking Rubber Pavers (Black/TerraCotta)	✓	✓	✓	✓	✓	24" x 24"	Single paver
HP Protective Mat	✓					15' x 300'	Per roll
EPDM Expansion Joint-Edge	✓	✓	✓	✓	✓	25 ft.	25 LF per carton
EPDM Expansion Joint-Field	✓	✓	✓	✓	✓	25 ft.	25 LF per carton

SURE-WELD TPO SYSTEMS

	MECHANICALLY FASTENED	ADHERED	FLEECEBACK	AFX	COVERAGE RATE OR AVAILABLE SIZES	PACKAGING
TPO MEMBRANES						
Sure-Weld 45-, 60- & 80-mil	✓	✓	✓	✓		4', 6', 8', 10', and 12' x 100' roll
Sure-Weld FleeceBACK TPO	✓	✓	✓		100-mil, 115-mil, 135-mil	6' x 100', 12' x 75', 6' x 75', 12' x 50', 12' x 100'
Sure-Weld FleeceBACK AFX TPO	✓	✓		✓	120-mil, 135-mil, 155-mil	6' x 75', 12' x 75'
FleeceBACK RL TPO		✓	✓		115-mil	10' x 50', 10' x 100'
TPO ADHESIVES AND SEALANTS						
Sure-Weld Bonding Adhesive		✓			60 sq. ft. per gallon	5-gallon pail
CAV-GRIP III Low-VOC Adhesive/Primer		✓	Wall Attachment Only		1,000-2,000 sq. ft. per cylinder	40# aerosol cylinder 85# aerosol cylinder
Aqua Base 120 Bonding Adhesive		✓	✓		100-120 sq. ft. per gallon	5-gallon pail
Flexible FAST Adhesive			✓		See PDS	Multiple
Low-VOC Bonding Adhesive		✓			60 sq. ft. per gallon	5-gallon pail
Weathered Membrane Cleaner	✓	✓	✓	✓	400 sq. ft. per gallon	1-gallon or 5-gallon pail
Cold Applied Adhesive				✓	50-67 sq. ft. per gallon	5-gallon pail
White One-Part Sealant	✓	✓	✓	✓	122 cubic inches per .5 gallon	(4) ½-gallon pouches/bucket
TPO Primer (Standard and Low-VOC)	✓	✓	✓	✓	200 to 250 sq. ft. per gallon	(6) 1-gallon cans/carton
TPO Clear Cut Edge Sealant	✓	✓	✓	✓	225 linear ft. per bottle	6 bottles per carton
Universal Single-Ply Sealant	✓	✓	✓	✓	25 ft. per tube (½" bead)	24 tubes, 10.1 fl. oz. each
TPO FLASHINGS						
TPO Molded Pipe Seals (White/Gray/Tan)	✓	✓	✓	✓	¾" to 8"	8 per carton
TPO PS Coverstrip 6" x 100' (White/Gray/Tan)	✓	✓	✓	✓	6" x 100'	2 rolls per carton
TPO Non-Reinforced Flashing (White/Gray/Tan)	✓	✓	✓	✓	12" x 50' & 24" x 50'	1 per carton
TPO Split Pipe Seals (White/Gray/Tan)	✓	✓	✓	✓	1" to 6"	8 per box
TPO Square Tubing Wraps (White/Gray/Tan)	✓	✓	✓	✓	3", 4", 5", 6"	8 per box
TPO Inside Corners (White/Gray/Tan)	✓	✓	✓	✓		12 per bag
TPO Outside Corners (White/Gray/Tan)	✓	✓	✓	✓		12 per bag
TPO Universal Corners (White/Gray/Tan)	✓	✓	✓	✓		20 per box
TPO Curb Wrap Corners (White)	✓	✓	✓	✓	7", 13", 19"	12 per box
TPO Molded Sealant Pockets (White/Gray/Tan)	✓	✓	✓	✓	7.5" to 11" x 6" oval	5 per carton
TPO Sealant Pocket Extensions (White)	✓	✓	✓	✓	14" overall length; 10" installed length	10 per carton
6" TPO PS RUSS	✓	✓			6" x 100'	2 rolls
10" TPO PS RUSS	✓				10" x 100'	1 roll
TPO T-Joint Covers (White/Gray/Tan)	✓	✓	✓	✓	4.5" diameter	100 per box
ACCESSORIES						
TPO Walkway Rolls (White/Gray/Tan)	✓	✓	✓	✓	34" x 50' roll	Per roll
TPO Coated Metal 4' x 10' (White/Gray/Tan)	✓	✓	✓	✓	4' x 10'	10 or 25 per skid
TPO OR PVC FASTENERS						
Insulfast Insulation Fasteners	✓	✓	✓	✓	1⅝" to 8"	1000 per package
3" Steel Insulation Plate	✓	✓	✓	✓	3" diameter	1000 per package
HP Fasteners (Insulation)		✓	✓		1¼" to 15"	500-1000 per package
HP-X Fasteners (Membrane)	✓				2" to 22"	500-1000 per package
HP-X ASAP Fasteners (Membrane)	✓				2" to 16"	150 to 250 per package
Piranha Plates	✓				2⅝"	1000 per package
HP-XTRA Fasteners (Steel Deck Only)	✓				2" to 12"	250-500 per bucket
TPO RhinoBond Plates	✓				3" diameter	500 per package
PVC RhinoBond Plates	✓				3" diameter	500 per package

SURE-FLEX PVC SYSTEMS

	MECHANICALLY FASTENED	ADHERED	FLEECEBACK	COVERAGE RATE OR AVAILABLE SIZES	PACKAGING
PVC MEMBRANES					
Sure-Flex 50- and 60- mil	✓	✓			40.5", 5', 81", and 10' x 100'
Sure-Flex 80-mil	✓	✓			40.5", 5', 81", and 10' x 75'
Sure-Flex KEE HP 50- and 60- mil	✓	✓			40.5", 5', 81", and 10' x 100'
Sure-Flex KEE HP 80-mil	✓	✓			40.5", 5', 81", and 10' x 75'
Sure-Flex PVC FleeceBACK 115-mil			✓		10' x 100'
Sure-Flex PVC FleeceBACK 135-mil			✓		10' x 75'
Sure-Flex KEE HP FleeceBACK 105-mil			✓		10' x 100'
Sure-Flex KEE HP FleeceBACK 115-mil			✓		10' x 100'
Sure-Flex KEE HP FleeceBACK 135-mil			✓		10' x 75'
FleeceBACK RL PVC 115-mil		✓	✓		10' x 50', and 10' x 100'
PVC FLASHINGS					
PVC Curb Wrap Corners (White/Gray/Tan)	✓	✓	✓	7", 13", 19"	12 per box
PVC/KEE Coverstrip (White)	✓	✓	✓	8" x 65', 8" x 80'	60-mil – 2 rolls per carton 80-mil – 1 roll per carton
PVC Flashing (White/Gray and White/Tan)	✓	✓	✓	12", 24" x 50'	1 per carton
PVC T-Joint Covers (White/Gray/Tan)	✓	✓	✓	4.5" diameter	100 per box
PVC Inside Corners (White/Gray/Tan)	✓	✓	✓		12 per bag
PVC Outside Corners (White/Gray/Tan)	✓	✓	✓		12 per bag
PVC Universal Corners (White/Gray/Tan)	✓	✓	✓		20 per box
PVC Molded Sealant Pockets (White)	✓	✓	✓	7½" x 6"	5 per carton
PVC Molded Pipe Seals (White/Gray)	✓	✓	✓	¾" to 8" diameter pipe	8 per box
PVC Split Pipe Seals (White/Gray/Tan)	✓	✓	✓	1" to 6" diameter pipe	8 per box
PVC Square Tubing Wraps (White/Gray/Tan)	✓	✓	✓	3", 4", 6"	8 per box
PVC ADHESIVES AND SEALANTS					
Low-VOC PVC Bonding Adhesive		✓		60 sq. ft. per gallon	5-gallon pail
HydroBond PVC Water-Based Adhesive		✓	✓	100 and 135 sq. ft. per gallon	5-gallon pail
Flexible FAST Adhesive			✓	See PDS	See PDS
White One-Part Sealant	✓	✓	✓	122 cubic inches per .5 gallon	(4) ½-gallon pouches/bucket
PVC Cut-Edge Sealant	✓	✓	✓	225' to 275' (⅛" bead)	(12) 16 oz. bottles/carton
PVC and KEE HP Membrane Cleaner	✓	✓	✓	400 sq. ft. per gallon	5-gallon pail
PVC COATED METAL & WALKWAY					
White PVC Coated Metal	✓	✓	✓	4' x 10' sheet	10 sheet/pallet
PVC Walkway Rolls (Gray)	✓	✓	✓	36" x 60' (91.4 cm x 18.3 m)	Per roll
LOW-VOC PVC Step 1 Activator	✓	✓	✓	250–300 sq. ft. per gallon	2 - One gallon cans
LOW-VOC PVC Step 2 Primer	✓	✓	✓	700 sq. ft. per gallon	2 - One gallon cans
PVC Step 2 Primer	✓	✓	✓	200–250 sq. ft. per gallon	2 - One gallon cans



800-479-6832 • P.O. Box 7000 • Carlisle, PA 17013 • Fax: 717-245-7053 • www.carlislesyntec.com

Carlisle, Sure-Flex, Sure-White, Sure-Seal, Sure-Weld, Sure-Tough, Sure-Tite, HP-X Fastener, InsulFast, Piranha Plate, SecurTAPE, SAT, FAST, FAT, HydroBond, CAV-GRIP, SecurShield, Ecostorm VSH, InsulBase, StormBase, X-Tenda Coat, VapAir Seal, RL, and FleeceBACK are trademarks of Carlisle. Hinged Target Sump is a trademark of Hunter Panels. InsulFoam, R-Tech and InsulLam are trademarks of Insulfoam. RhinoBond is a registered trademark of OMG, Inc. ENERGY STAR is a registered trademark of the US Government. LEED is a registered trademark of the U.S. Green Building Council. SECURROCK is a trademark of USG Corporation. DensDeck and DensDeck Prime are trademarks of Georgia Pacific. Galvalume is a trademark of Bethlehem Steel Corp. REPRINT CODE: 606370 - "Carlisle SynTec Systems Product Reference Guide" - 04.01.20 - © 2020 Carlisle.